

SETA Welcomes Kinder World Inc. to Sacramento County Early Head Start

In collaboration with Sacramento County Office of Education, SETA launched its Early Head Start-Child Care Partnership project in July 2015 with expanded services to 36 infants and toddlers at the Kinder World Inc. Preschool and Child Care center.

One of the great aspects of this new collaboration is that children enrolled in a private child care center will receive comprehensive Early Head Start services. This means that children will benefit from regular well-child checks, dental screens, developmental screens, home visits and parent-teacher conferences,

enhanced school readiness activities, special education and mental health services. Regular monitoring and follow-up is also provided for children who need additional support services and treatment.

Staff that are participating in the project benefit from enhanced professional development, staff training, college coursework and coaching.

While the program recently launched in July, results of the collaboration quickly became evident. During the first week of the collaboration, a staff noticed a child with a possible medical condition affecting her neck; within two weeks, the child had been seen by a physician, referred to a specialist and underwent surgery for a life-threatening condition. The child is recovering well and hopes to return to school soon.

THE SETA HEAD START MISSION

SETA Head Start's mission is to improve the lives of low-income children by providing quality comprehensive child development services that are family focused, including education, health, nutrition and mental health.

2014-2015 HS/EHS Actual Expenditures

	HS	EHS	OTHER FUNDING
SETA (W/PARTNERS)	\$24,839,592	\$4,138,074	\$4,781,414
ELK GROVE	\$3,078,168	\$-	\$2,987,751
SAC CITY	\$8,635,763	\$1,561,017	\$8,197,934
SAN JUAN	\$4,585,140	\$1,742,033	\$4,765,526
TWIN RIVERS	\$1,596,691	\$-	\$4,222,506
WCIC	\$833,549	\$-	\$-
TOTAL	\$43,568,903	\$7,441,124	\$24,955,131

2014-2015 HS/EHS IN-KIND

	HS	EHS
SETA (W/PARTNERS)	\$7,233,906	\$2,321,091
ELK GROVE	\$950,767	\$-
SAC CITY	\$2,703,893	\$203,028
SAN JUAN	\$945,887	\$655,403
TWIN RIVERS	\$402,397	\$-
WCIC	\$241,536	\$-
TOTAL	\$12,478,386	\$3,179,522

2015-2016 HS Budget

	HS	EHS
SETA (W/PARTNERS)	\$24,433,837	\$4,531,967
ELK GROVE	\$3,134,314	\$-
SAC CITY	\$8,635,832	\$1,564,606
SAN JUAN	\$4,585,140	\$1,742,036
TWIN RIVERS	\$1,596,691	\$-
WCIC	\$833,568	\$-
TOTAL	\$43,219,382	\$7,838,609



SACRAMENTO EMPLOYMENT AND TRAINING AGENCY
925 DEL PASO BLVD.
SACRAMENTO, CA 95815
916-263-3804
HEADSTART.SETA.NET

GOVERNING BOARD MEMBERS

Supervisor Don Nottoli
County of Sacramento
Chair

Sophia Scherman
Public Representative
Vice-Chair

Councilmember Jay Schenirer
City of Sacramento

Supervisor Patrick Kennedy
County of Sacramento

Councilmember Allen Warren
City of Sacramento

Jasmine Jamison
Parent Advisory Committee (PAC) Chair

Lynda Williams
Policy Council (PC) Chair

DELEGATE AGENCIES/PARTNERS

Elk Grove Unified School District
Sacramento City Unified School District
San Juan Unified School District
Twin Rivers Unified School District
Women's Civic Improvement Club
Sacramento County Office of Education
River Oak Center for Children
Kinder World

Kathy Kossick
Executive Director

Denise T. Lee
Deputy Director



ANNUAL REPORT 2014/2015

2014/2015 ACCOMPLISHMENTS

In July 2015, Sacramento County expanded its services to 84 infants and toddlers under the Early Head Start-Child Care Partnership grant. Services are provided in collaboration with Sacramento City Unified School District, Sacramento County Office of Education, and Kinder World Inc. This innovative model layers funding to provide comprehensive services for children enrolled in private child care and public school infant/toddler centers.

SETA Head Start launched its first on-the job Parent Intern training program, offering 5 parent interns hands-on job experience in food services, clerical support, data entry, health assistant and facilities maintenance. As a joint effort with the Work Force Development department, interns are paired with a career coach who assists with job readiness skills, job search, resume writing and interview techniques. One parent intern shared, "that his Head Start Intern experience helped him land a part-time job with Wal-Mart, allowing him to proudly provide for his growing family."

During the 2015 program year, Sacramento County Head Start completed its fourth cohort of the Teaching Pyramid/CSEFEL model in the classrooms. The Teaching Pyramid is a teacher interactive curriculum that provides strategies and tools for teachers to create strong environments, routines and classroom behavior expectations as well as to create supportive interactions in the context of relationships. Routinely, teachers report the positive impact this curriculum has had on their teaching practices and children's outcomes.

Through various partnerships and coaching models, Sacramento County Head Start programs have been implementing coaching practices with teachers in the classrooms. Research has shown that staff development supported by individualized coaching is proven to have the strongest impact on implementation. Sacramento County teachers are voluntarily participating in various coaching models that meet their individual style, personality and time constraints. Supervisors have reported that staff development truly comes to life when re-enforced with coaching.

School Readiness

Through effective, research-based strategies, Head Start ensures all children are prepared for their transition to Kindergarten.

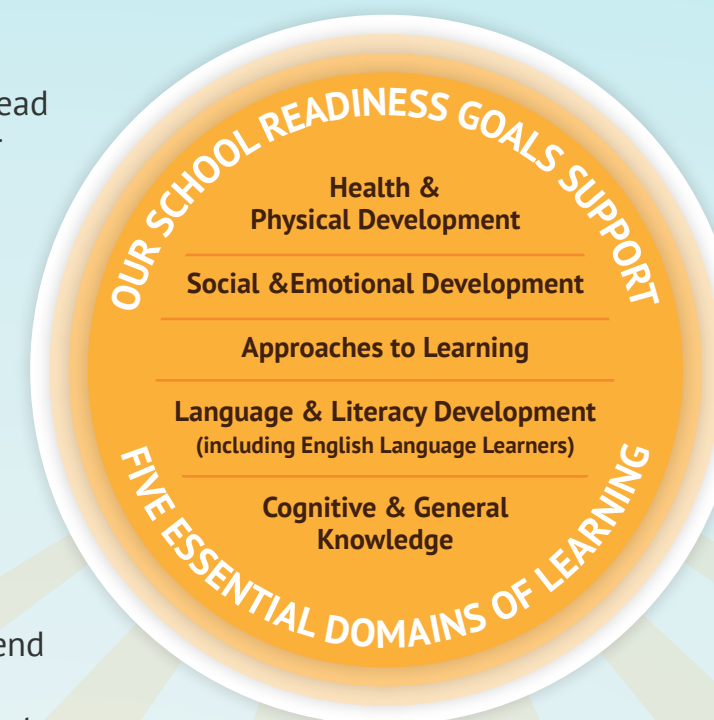
Head Start remains a leader in the early childhood field with a strong, clear, and comprehensive focus on all aspects of healthy development, including physical, cognitive, and social and emotional development, all of which are essential to children getting ready for school.

Results of the 2014-2015 Desired Results Developmental Profile scores indicated by the end of their Head Start experience, the majority of preschoolers about to matriculate into kindergarten are in the top two levels (score between 3 and 4), an indicator of Kindergarten School Readiness.

Children's Developmental Growth in Head Start Kindergarten Eligible Children

DEVELOPMENTAL DOMAINS	FALL	SPRING
Approaches to Learning	2.6	3.4
Creative Arts	2.9	3.6
Language Development	2.6	3.4
Literacy Knowledge and Skills	2.3	3.2
Logic & Reasoning	2.5	3.3
Mathematic Knowledge & Skills	2.4	3.3
Physical Development	2.9	3.6
Science Development	2.5	3.4
Social & Emotional Development	2.6	3.4
Social Studies Knowledge and Skills	2.5	3.4

Based on assessment results, literacy and mathematics are lower scoring domains. However, through a targeted approach in curriculum enhancements, staff development and increased teacher effectiveness, these domains have the highest percentage of change from fall to spring.



2014-15 SETA HEAD START FACTS

Enrollment

	FUNDED	ACTUAL
HEAD START	4,857	6,197
EARLY HEAD START	656	1,066

Represents a service level of 22% of the eligible children in Sacramento County.

Special Education

Children with special needs

PRESCHOOL	12%
INFANT/TODDLER	16%

Volunteer Hours

PARENT FOOD AIDES	7,746.25
SCHOOL READINESS AIDES	4,053.25
FLIP (Family Literacy Involvement Program)	94,831.18

Countywide, Head Start/Early Head Start provided more than 2 million meals, including breakfast, lunch and snacks to children last year.

HEALTH

Medical Screenings	5,511 / 89%
Dental Screenings	5,100 / 82%
Immunizations	7,165 / 99%
Well Child Checks	935 / 88%

Degreed Educators

TOTAL	258
AA DEGREE	74
BA DEGREE OR HIGHER	184

