

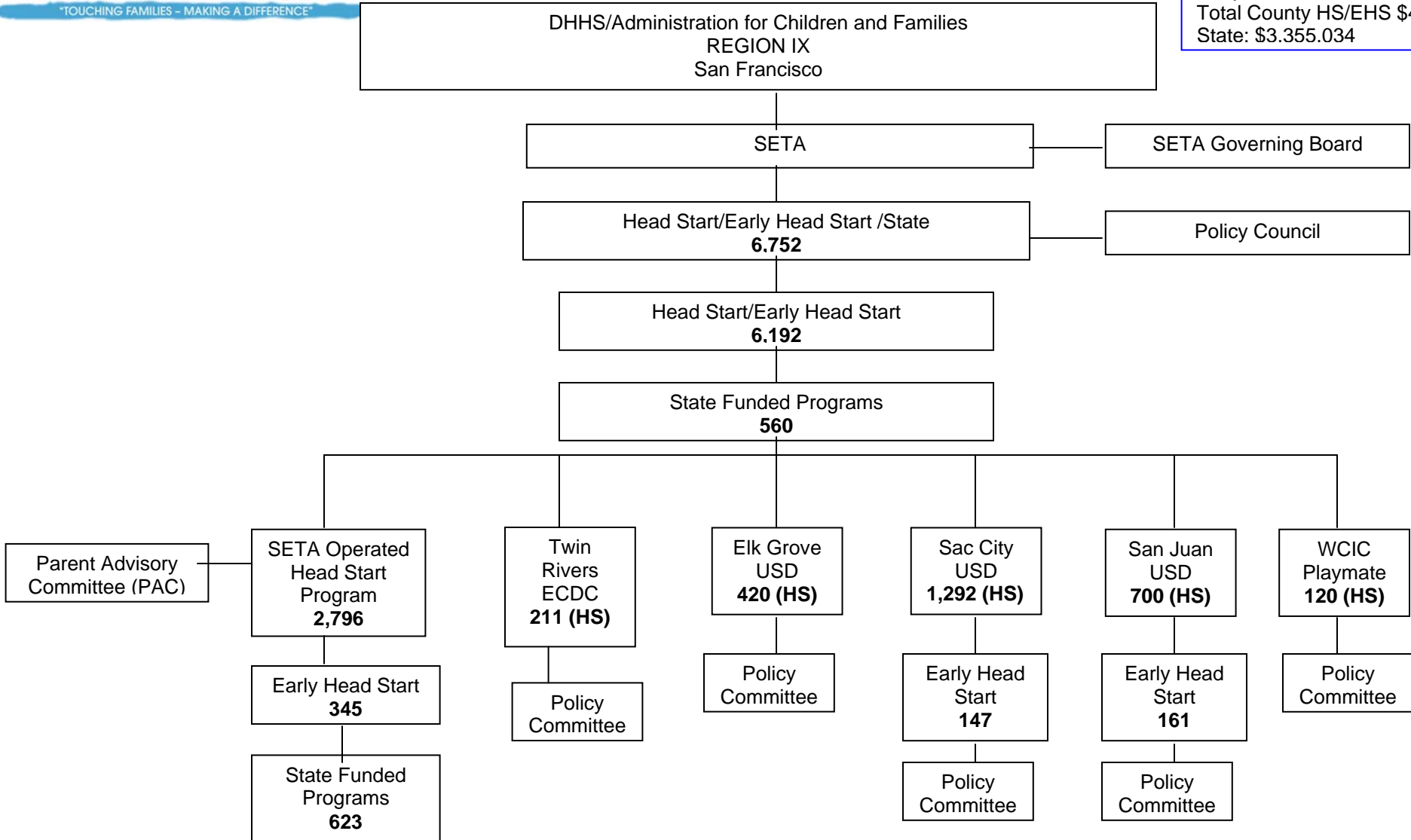


HEAD START

Shared Governance Organization

FY 2011-2012

Head Start: \$42,209,554
 Early Head Start: \$6,206,332
 Total County HS/EHS \$48,415,886
 State: \$3.355.034



Shared decision making involves the Policy Council/Committee, Parent Advisory Committee, SETA Governing Board, Head Start Directors, Executive Director and the Board of Directors or School Board.