

**Manager/Program Support Services**  
**Lisa Carr**  
*Family Engagement, ERSEA, and Home-Base*  
 Delegate/Grantee:

- Family Engagement
- Community Partnerships
- Home-Based
- Eligibility
- Recruitment
- Selection
- Enrollment
- Attendance

EHS Partners (SCOE/ROCC)  
 Community Outreach/Events  
 ChildPlus  
 Child Outcomes/HELP  
 Home-Base Curriculum  
 Grants

**Manager/Program Operations**  
**Megan Lamb**  
*School Readiness, Special Education, Mental Health, and Safe Environments Services*  
 Delegate/Grantee:

- School Readiness
- Special Education
- Mental Health

Grantee Center Operations  
 Child Outcomes/DRDP Curriculum  
 Transitions  
 Substitutes  
 CLASS  
 Environmental Rating Scales  
 Grants

**Manager/Health and Nutrition**  
**Vacant (1)**  
*Health, Oral Health, Nutrition, and Quality Assurance*  
 Delegate/Grantee:

- Health
- Dental/Oral Health
- Nutrition
- Quality Assurance
- Health Services Advisory
- Committee (HSAC)

Grantee Operations:

- Food Services
- Quality Assurance

Management:

- Consultants
- CPR/First Aid
- CACFP

Grants

**Manager/Program Compliance**  
**Betsy Uda**  
*Facilities, Safe Environments, and Qualifications*  
 Delegate/Grantee:

- Safe Environments
- Safety/Supervision
- Security
- Grantee Facilities
- Leases/Contracts/Service Agreements
- Inventory/Supplies
- Disaster Preparedness
- CDSS Licensing
- CDE/CDSS Liaison
- Grants

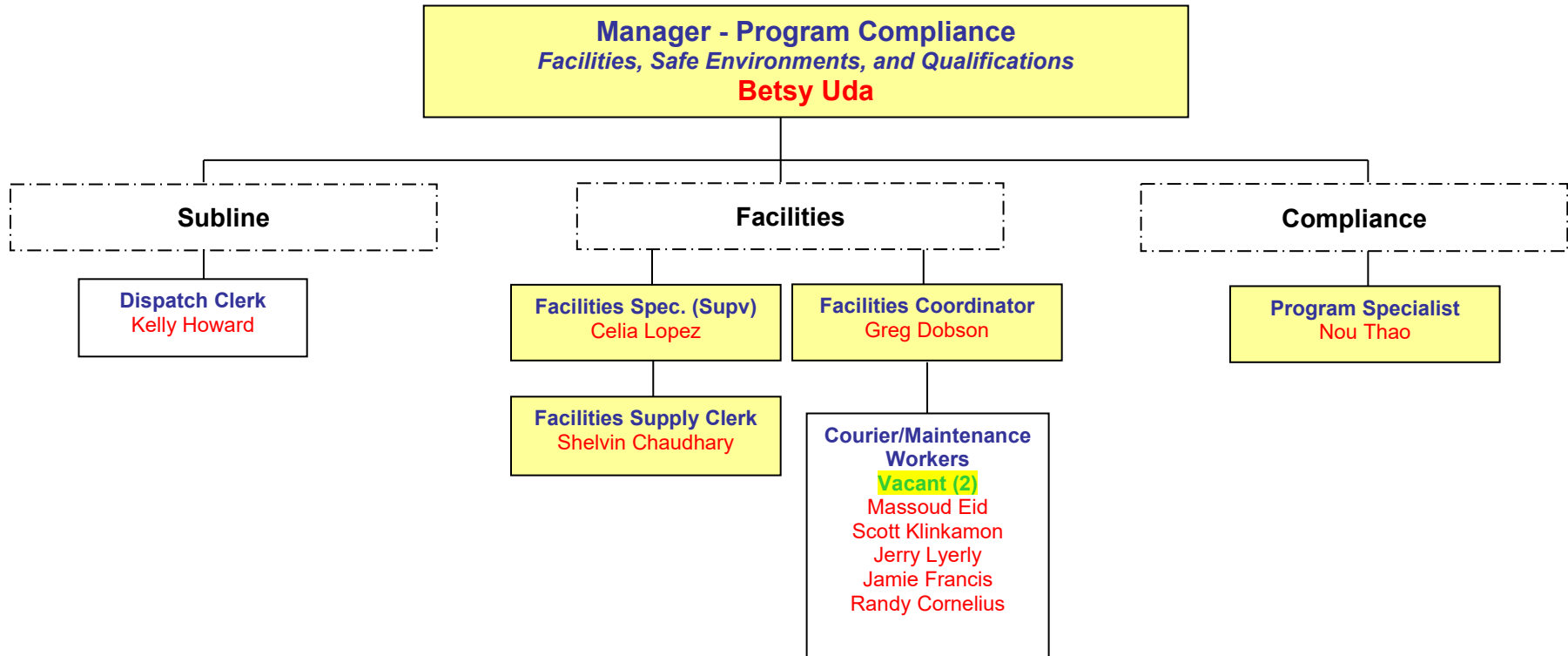
**Program Officer/Admin. (Supv)**  
**Melanie Nicolas**

**Program Specialist**  
 Katrina McGhie  
 Crystal Corino  
 Marlo Lopez

**Governance/Parent Engagement Coordinator (Supv)**  
**Gaylon Ndiaye**

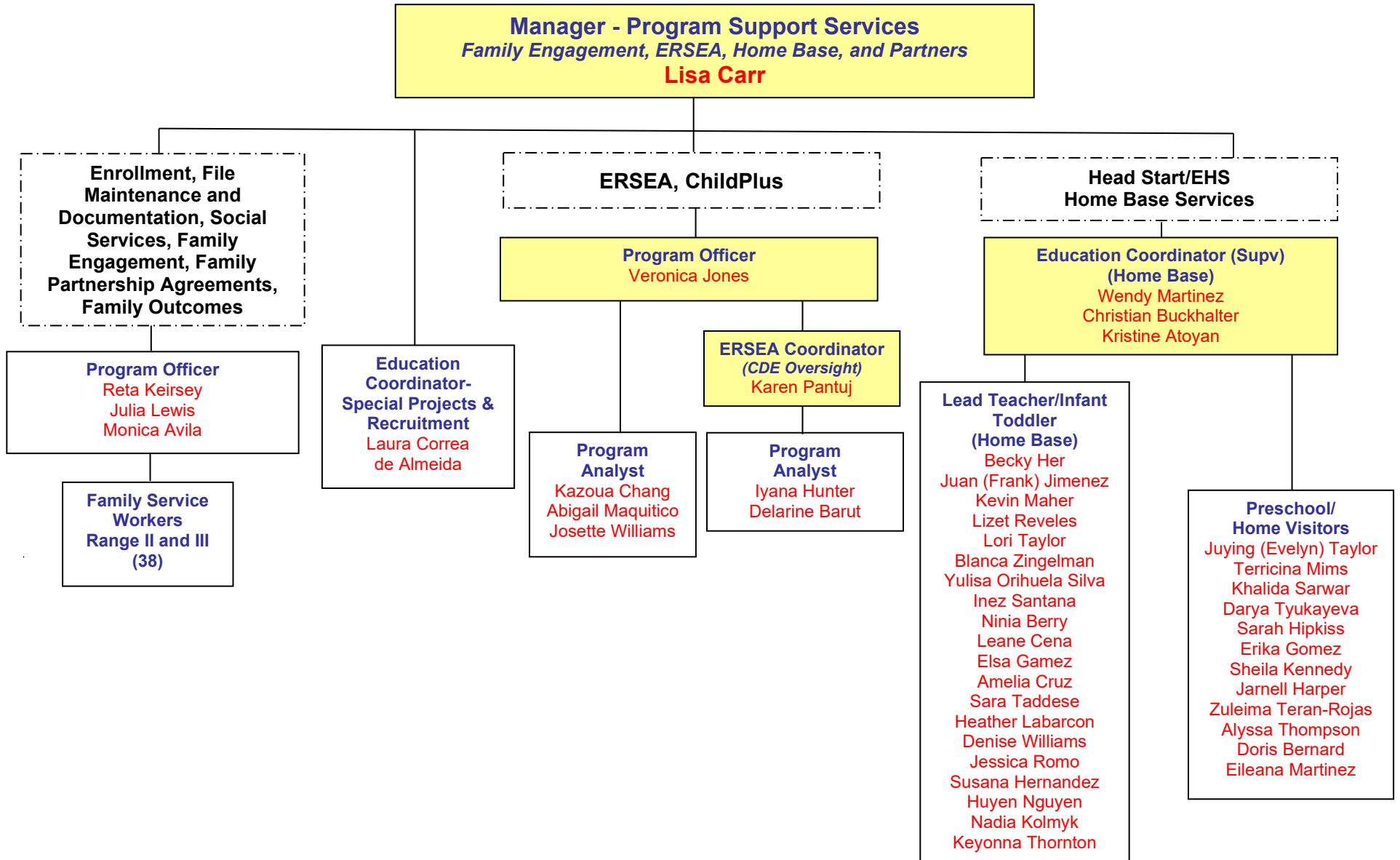
**Children and Family Services Department  
Organizational Chart**

**2024-2025**



# Children and Family Services Department Organizational Chart

2024-2025

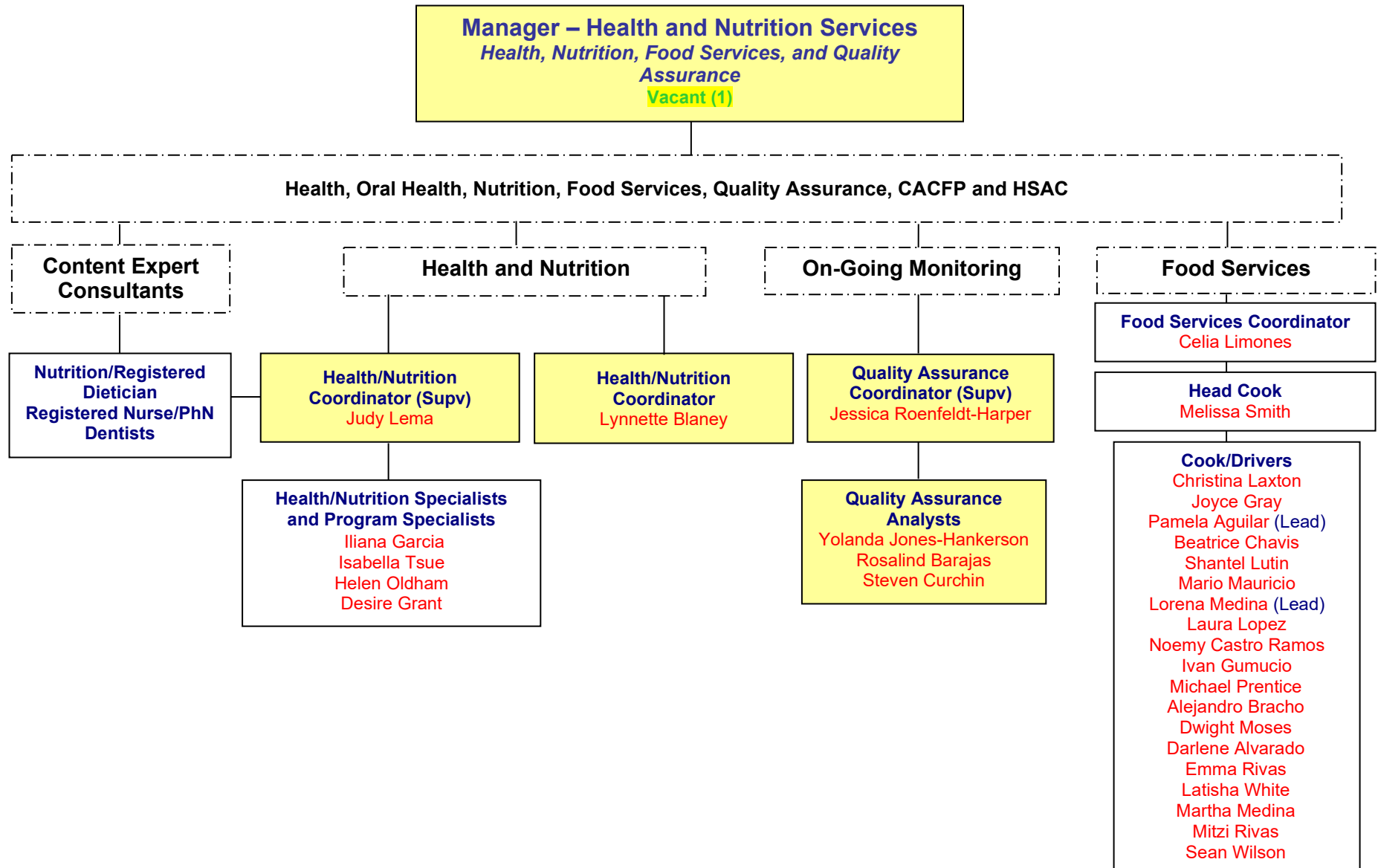


Revised 9/10/2024

Staff provides services Countywide
  Department Description
  Provides Support

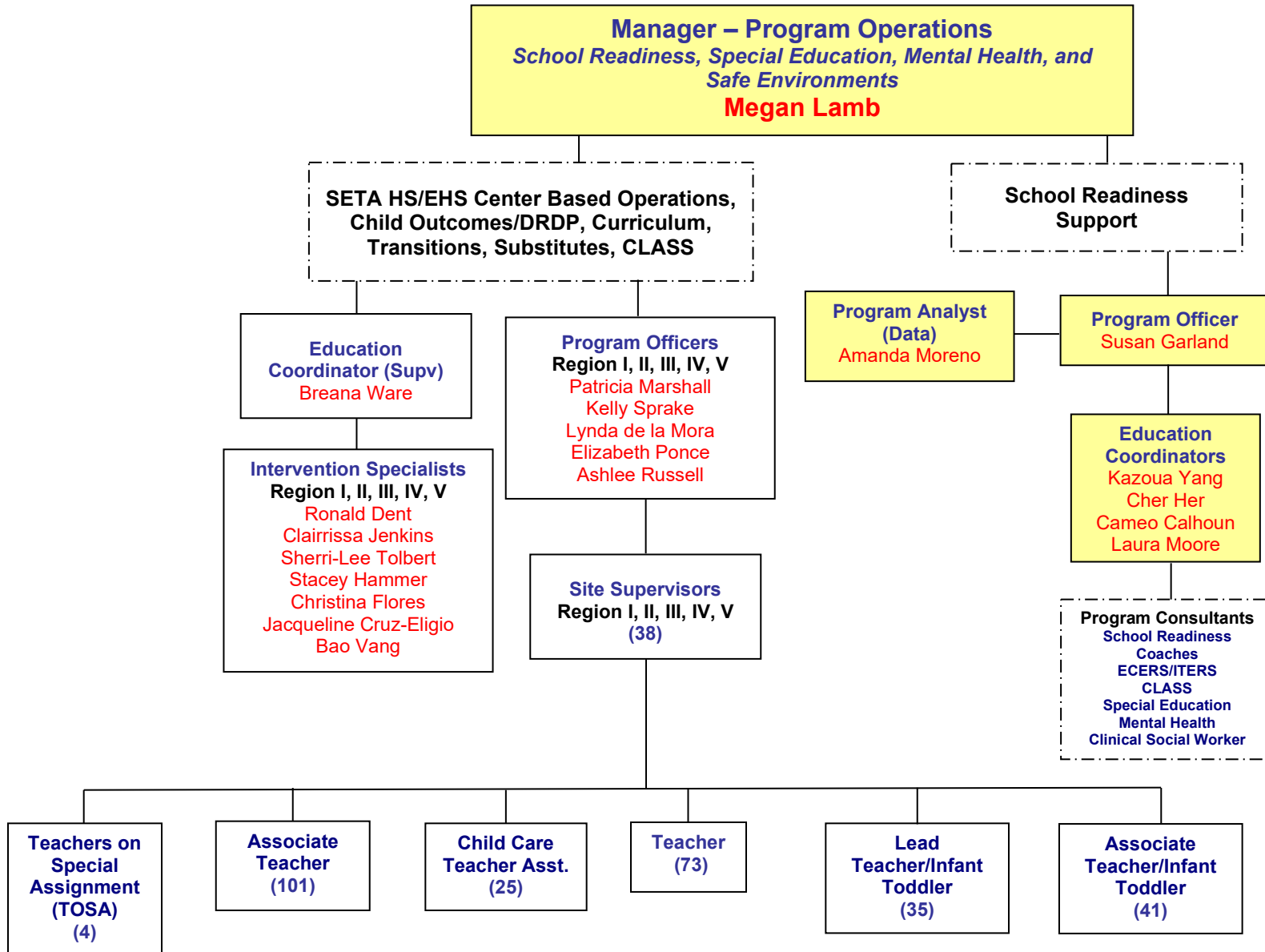
**Children and Family Services Department  
Organizational Chart**

**2024-2025**



# Children and Family Services Department Organizational Chart

2024-2025



Revised 9/10/2024



Staff provides services Countywide



Department Description



Provides Support

2024-2025

**SETA ADMINISTRATION DEPARTMENT**

